



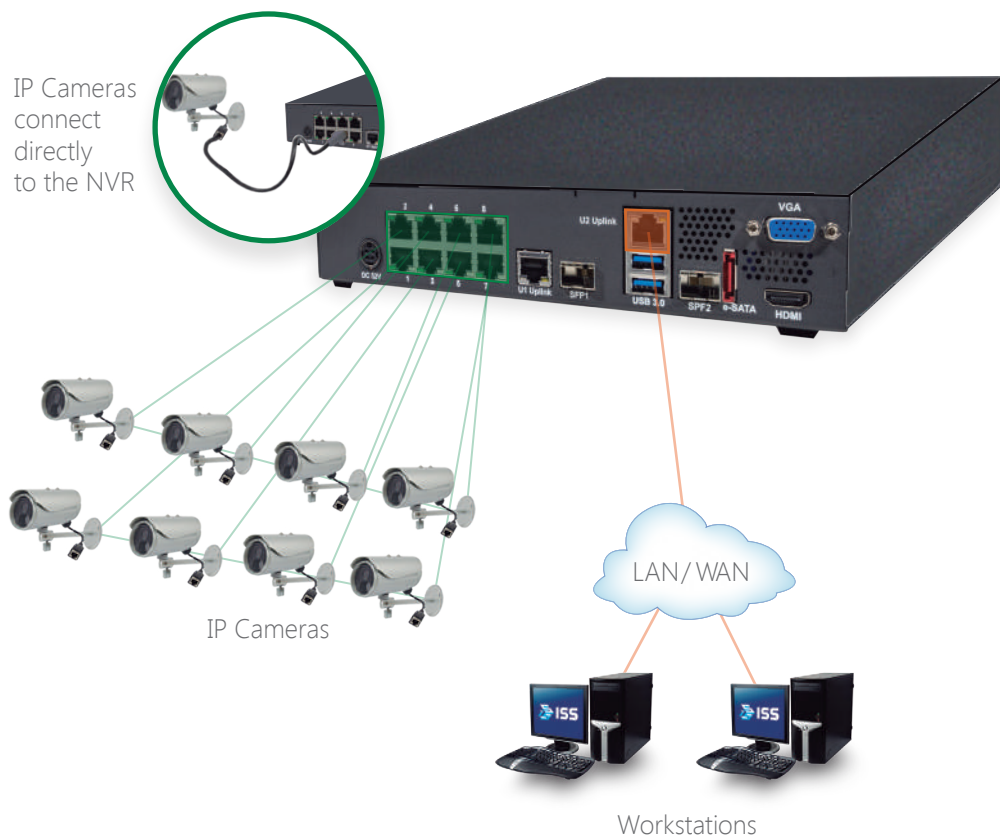
## SECUROS SMART NVR

The SecurOS™ Smart NVR from ISS is an unmatched all-in-one solution, scalable from small to large installations. The advanced and high performance design is coupled with unique features that include an Intel® architecture with an embedded Layer-2 Smart and Managed Switch. It supports not only the SecurOS™ VMS but also all Video Analytics Modules available from ISS, including License Plate & Container Number Recognition, Face Capture & Recognition, and Tracking Detectors.

SecurOS Smart NVR connects IP cameras directly to the appliance, which reduces and in some cases eliminates video streaming on existing company networks and decreases the amount of wiring and point of failures on the solution.

- SecurOS™ Xpress, Professional, Premium or Enterprise Options Available
- Supports up to 64 IP Cameras
- Embedded High PoE (802.3at) Switch
- Gigabit Uplink Port – SFP Combo
- Up to 24 TB Internal Recording \*
- RAID 0/1/5/10 \*
- Triplex Operation: Simultaneous Playback/Record/View
- Pre and Post Alarm Recording
- Motion Masking Capability
- Multi-Layer Mapping
- Audio and Video Synchronization
- Export as JPEG/PNG, AVI, ASF, or ISS Native Format
- SecurOS™ Mobile App Support
- Cyber Security Features Available
- 3 Year Parts Warranty

\* Available on SOS-APP-124



Enhance your system with these available add-on modules.



SECUROS AUTO



SECUROS FACE



SECUROS TRAFFIC SCANNER



SECUROS CARGO



SECUROS POS



SECUROS TRACKING KIT

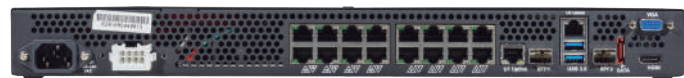
# Specifications

	8 Port ISS Appliance	16 Port ISS Appliance	24 Port ISS Appliance
ISS Model Number	SOS-APP-108	SOS-APP-116	SOS-APP-124
Max # of Cameras Supported	32	48	64
Max Camera Bandwidth <i>(with / without SecurOS Motion Detection)</i>	75 Mbps / 150 Mbps	125 Mbps / 250 Mbps	150 Mbps / 300 Mbps
Network Ports (PoE)	8 x 10/100	16 x 10/100	24 x 10/100
Total PoE Output	140W	277W	480W
Processor	Intel® i3-4360	Intel® i5-4590S	Intel® i7-4790S
Memory	8 GB DDR3	16 GB DDR3	16 GB DDR3
HDD Storage (Raw)	2 TB, 4 TB, 6 TB options	4 TB, 8 TB, 16 TB options	8 TB, 16 TB, 24 TB options
RAID	N/A	0/1/5/10/JBOD	0/1/5/10/JBOD
Operating System	Windows 10		
Graphics	Intel® HD4600 (with QSV support)		
Boot Drive	120GB mSATA SSD		
eSATA	Yes		
Video Output	HDMI (3840 x 2160 max.) VGA (2048 x 1536 max.)		
USB	2 x USB 3.0 (rear) 2 x USB 2.0 (front)		
Uplinks	2 x 10/100/1000 Mbps Combo SPF 2 x 10/100/1000 Mbps RJ-45		
Switch Control	Browser Based		
Layer 2 Switching	Yes		
Cyber Security Protection	Yes		
Input Voltage	90 to 265 VAC		
Power Supply	280W	500W	750W
Unit Dimensions	9.4"W x 12.8"D x 1.75" H	17.25"W x 21.2"D x 1.75" H	17.25"W x 21.2"D x 1.75" H
Temperature	0°C to 45°C		
Humidity	10% to 90% non-condensing		
Emission	FCC Part15 Class A, CISPR22, EN 55022: Class A, EN 61000-3-2, EN 61000-3-3		
Susceptibility	EN 55024		
Safety	EN 60950-1		
Mounting	Desk / Rack Mount		
Parts Warranty	3 years		

## SecurOS™ Smart NVR - 8 Port Appliance



## SecurOS™ Smart NVR - 16 Port Appliance



## SecurOS™ Smart NVR - 24 Port Appliance



Intelligent Security Systems • 1480 US Highway 9 North - Suite 202 • Woodbridge, NJ USA 07095  
 +1 732 855 1111 office • +1 732 855 1175 fax • sales@isscctv.com email • www.isscctv.com